



### Coordinated Entry Process

Youth Homelessness Demonstration Program (YHDP) funded programs target youth who are experiencing homelessness, including those who are unaccompanied and pregnant or parenting, where no member of the household is older than 24. YHDP funded projects as well as CoC funded youth TH-RRH are allowed to serve HUD definition of homeless **Categories 1** (Literally homeless), **2** (at imminent risk of homelessness), and **4** (fleeing/attempting to flee DV). The Youth Homelessness Demonstration Program has enabled our CoC to create youth and young adult (YYA) specific access points for Coordinated Entry (CE) and expand our housing resources for unaccompanied youth in Niagara County. The YYA CE Lead agency for Niagara County is Heart, Love, & Soul. The designated Outreach Team for Niagara County is a collaboration between Pinnacle Community Services and Heart, Love & Soul.



### Description of Projects

The joint Transitional-Rapid Rehousing project is designed to provide **Y**outh and **Y**oung **A**dults (YYA) swift access to crisis housing (TH) and a pathway from that crisis housing to rapid rehousing (RRH). YYA may choose to use either the TH portion or the RRH portion, or move from the TH portion into the RRH portion at their discretion.

The Transitional portion of the project acts as temporary / crisis housing for Youth and Young Adults (YYA). YYA age 18 and over may choose to reside in transitional housing or rapid rehousing when units are available. There is not a requirement for youth to enter the TH portion before being able to utilize RRH, however youth residing in TH will be prioritized for RRH units.

For Further Information, please contact:  
Melia Smith, Transitional Site Supervisor  
1622 Falls Street  
Niagara Falls, NY 14303  
(716) 800-3900, ext. 5301

Or call:  
(716) 285-3403, ext. 2231

**See our virtual tour at**

<https://www.communitymissions.org/yhdp>



**A DIVISION OF  
COMMUNITY  
MISSIONS OF  
NIAGARA FRONTIER,  
INC**



**“Falls Street Station”**

**Youth Homelessness  
Demonstration Project**

**Transitional Housing/  
Rapid Rehousing  
for Youth  
(TH/RRH)**



**1622 Falls Street  
Niagara Falls, NY 14303  
Telephone (716) 800-3900, ext. 5301**

[www.communitymissions.org](http://www.communitymissions.org)

Funded by US Department of Housing  
and Urban Development  
through the Homeless Alliance of  
Western New York

## TH/RRH Mission Statement:

The TH/RRH for Youth program provides a stable living situation, while assisting youth with goals for employment, education and other objectives needed for successful independent living. Utilizing previous skills developed in other placement settings, the Transitional Housing program builds upon these skills by providing youth with supported opportunities to practice living within the community under staff supervised conditions. Case Management services include life skills training, referrals and linkage to community support services, and advocacy. Youth continue moving gradually toward ultimate self-sufficiency following a transition period, to life in their own apartment.

### Objectives:

1. To provide safe, consistent and nurturing environments for youth as they transition to living on their own, while partnering with youth to design, commit to and complete individualized programming and self-directed goals.
2. To facilitate linkages with community agencies to empower youth while focused efforts are made to assist them with completing education, employment, health care, parenting skills and counseling support goals.
3. To improve the self-esteem, maturation and independence of each youth to the fullest extent of their ability.
4. To provide youth with a wide variety of life skills which will promote independence.



## Transitional Housing Admission Criteria:

Youth who are between the ages of 18-24, and emotionally ready and willing to live alone (including with a roommate) with staff and community supports. Parenting youth will also be accepted as referrals.

Youth who are currently homeless, at imminent risk of homelessness, or fleeing violence will be accepted as referrals.

Youth who are willing to sign the TH/RRH Admission Contract, and agree to be an active participant in their service planning.

Youth who are **not** dangerous to self or others, and have no active mental health or substance abuse issues causing concerns for safety or the safety of others.

Youth who have **no** documented recent history of arson or homicidal behavior.

Youth who have an I.Q. score above the current number specified as needing developmental disability support programming.

Youth who are capable of self-preservation, as evidenced by successfully completing a Standard Capability of Self-Preservation Test.

Youth who do not show severity of psychiatric problems which necessitate evaluation by emergency psychiatric professionals.

Youth who show an acceptance of medication therapy, if so prescribed.

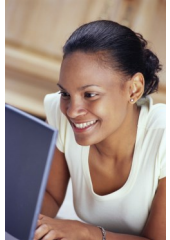
## Rapid Rehousing Admission Criteria:

Rapid Rehousing is designed to help clients to be quickly and permanently housed in their own apartment in the community. YYA residing in the TH portion of the project are automatically eligible for RRH if they choose, as all youth are enrolled in TH-RRH jointly when they enter the project. YYA ages 18-24 may be referred to the RRH portion if they are either in TH and choose to move to RRH, or are prioritized from the by-name list based on their TAY-VI-SPDAT score and length of homeless history.

## On Site Services:

CMI practices a Youth Guided approach for services, service planning and case management, ensuring the youth are empowered, encouraged, supported and responsible for their decision-making role in their care.

Youth will have the opportunity to meet for group and individual meetings with their Peer Support Specialist and the Transitional Case Manager. Medical, dental and educational services will be provided at a community level for each youth in care. The youth may choose to attend local public schools and access educational opportunities through local colleges, universities and specialized trade schools.



Employment supports will be coordinated through a variety of connections with local employers and NYS WorkForce-One. Job search, career exploration and job readiness skills will also be a part of program assessment and training.



Youth will also be provided with opportunities to participate in recreation and positive social activities according to their individual interests and the activity schedule for the program.



The Peer Support Specialists will help youth to design their own individual leisure time plans and help them to get comfortable with their surroundings.